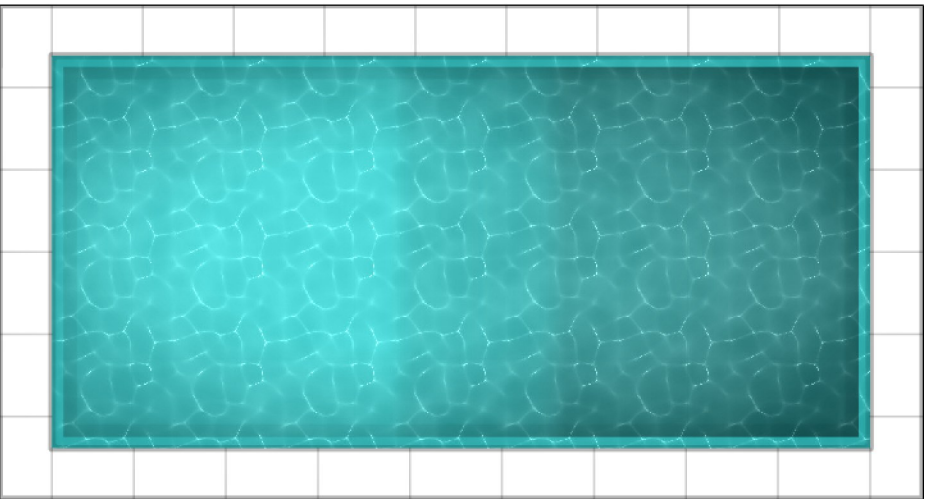


Sugarde, 19120 Atillac - Floor Plans

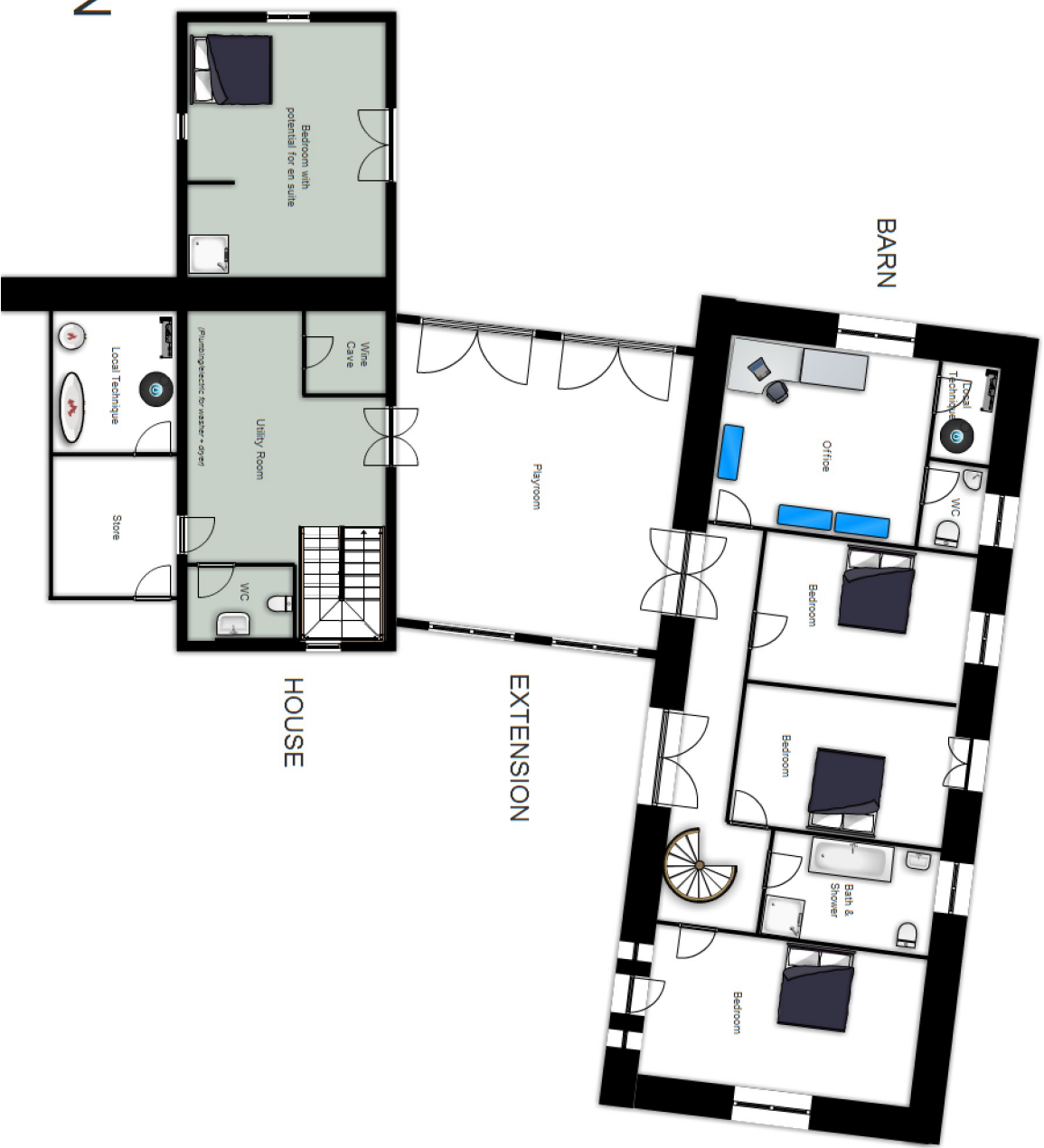
The following notes appertain to the floor plans on the next 2 pages:-

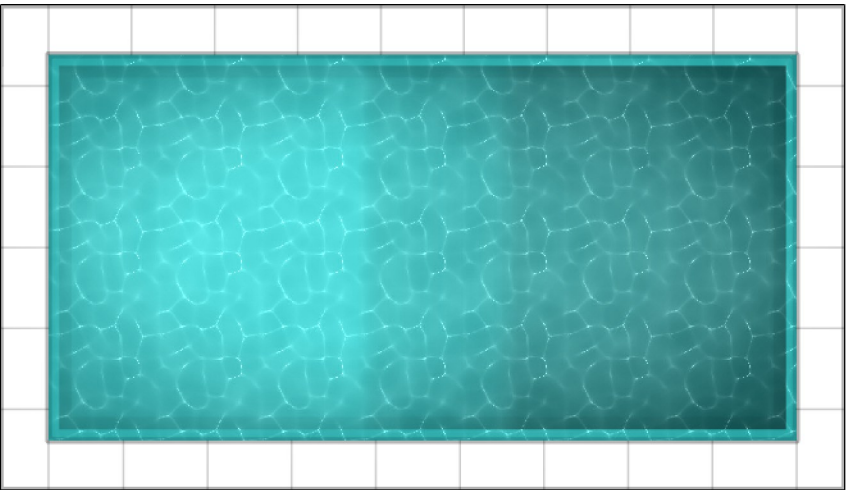
1. These are not architect's drawings. They are to scale but they are not 100% accurate: some of the dimensions may be about 10-20cm out due to the limitations of the package I used to draw them. They do, however, give a very good idea.
2. The swimming pool is correct only in its approximate location and approximate pool "bassin" size:- in reality the terracing (on steel reinforced concrete to prevent movement) is far bigger: it is 3m wide along the sides and 4m wide at both ends.
3. The plans are marked "HOUSE", "EXTENSION", and "BARN" – these relate to the 2 buildings as they were when they bought the property plus the one we are in the process of building in order to join the HOUSE and BARN together.
4. To give you an idea of what goes where, all of the photographs and the artists impression on the website are taken from the "left" – i.e. from the swimming pool.
5. The plans are of the planned **finished** property, not the property as it is now. The following building work is still required, in addition to the interiors of the "House" and "Extension" :-
 - a. The "Extension": everything from the ground floor up (extensive foundations and ground floor concrete raised slab are already in place). The plan is to build wooden walls on a steel frame.
 - b. The "House" downstairs: Cave walls, Toilet walls, Windows.
 - c. The "House" upstairs: Windows and Front Door, Roof over Terrace.
 - d. The "Barn" downstairs: Internal Walls for the 3 bedrooms and bathroom.

Note that the above list is not exhaustive.



GROUND FLOOR PLAN





FIRST FLOOR PLAN

